

MPB16 Series

16mm Metal Pushbutton Switches



SPECIFICATIONS

RATING : 2A/36VDC
ELECTRICAL LIFE : 200,000 make-and-break cycles at full load
MECHANICAL LIFE : 1,000,000 cycles
INSULATION RESISTANCE : 1,000 MΩ min. at 500VDC
DIELECTRIC STRENGTH : 2,000V RMS @ sea level
CONTACT RESISTANCE : 50 mΩ max.
OPERATION TEMPERATURE : -20°C~+70°C
TRAVEL : About 2.0±0.20mm
OPERATION PRESSURE : 4.5N±1.5N
INGRESS PROTECTION : IP67
TORQUE : 11.5 kgf · cm
THICKNESS : 8.0mm (Max.)
Current limiting resistor is required to limit LED forward current to 20mA.

MATERIALS

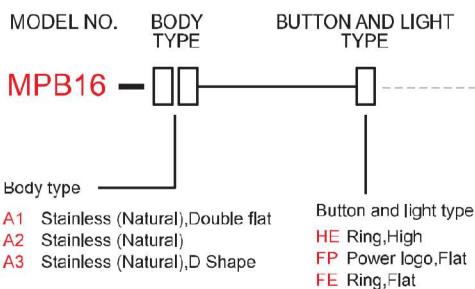
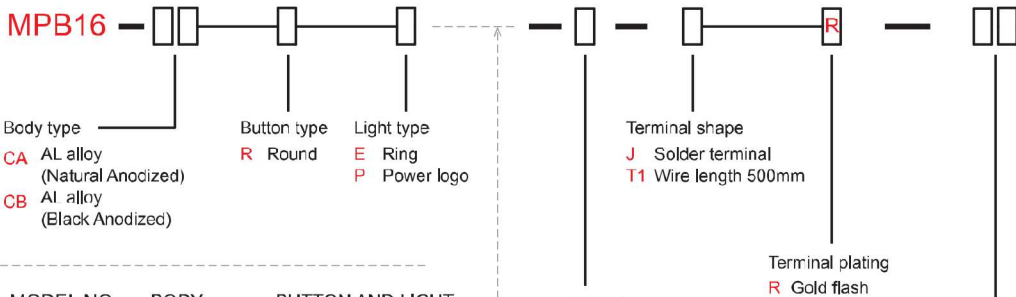
BUSHING : Aluminum alloy / Stainless Steel
BASE : PBT (UL 94-V0)
ACTUATOR : PC (Translucent UL 94-V2)
CAP : Aluminum alloy / Stainless Steel
SPRING : Steel.
SEALING : Silicone (Translucent).
O-Ring : Silicone (Translucent).
TERMINAL : Brass ,Gold flash plated.
CONTACT : Silver alloy.
HEX NUT : Brass (Nickel plated).

MPB16 Pushbutton Switches

HOW TO ORDER



MODEL NO. BODY TYPE BUTTON TYPE LIGHT TYPE LED COLOR TERMINAL SHAPE TERMINAL PLATING LED VOLTAGE



LED color	
ITEM NO	COLOR
0	Without LED
1	White
3	Red
4	Orange
5	Yellow
6	Green
7	Blue
DUAL COLOR LED	
A	Red&Green
RGB COLOR LED	
RGB	RGB

Resistance (About LED Voltage)	
0V	Without Resistance
3V	LED input 3 VDC, 47Ω * Red/Yellow/Orange LED type only
6V	LED input 6 VD, 180Ω
12V	LED input 12 VDC, 470Ω
24V	LED input 24 VDC, 1000Ω

* ohms value of resistance tolerance: ±5%

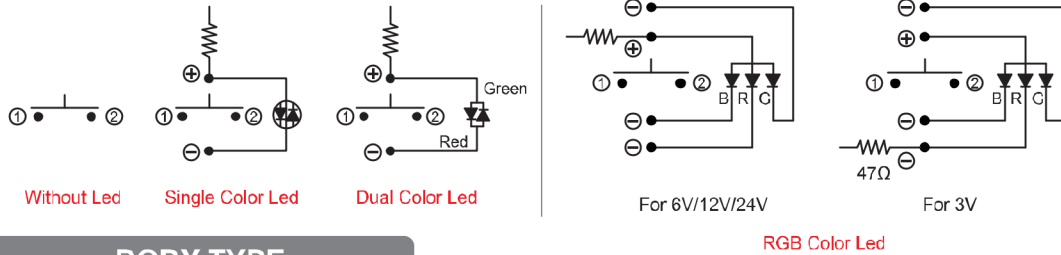
EXAMPLE:
 MPB16-CARE-0-JR-0 (Without LED)
 MPB16-CARE-[]-JR-[]V
 LED color LED voltage

MPB16 Series

16mm Metal Pushbutton Switches

CIRCUIT

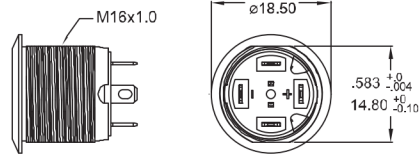
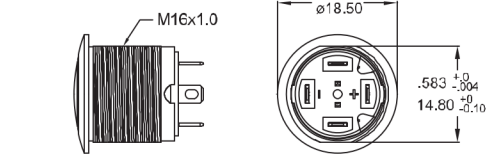
※ According to the input voltage adjustment resistance



BODY TYPE

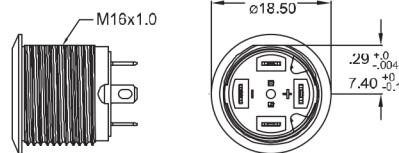
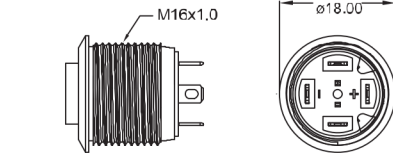
CA/CB Aluminum alloy

A1 Stainless Steel



A2 Stainless Steel

A3 Stainless Steel (D Shape)



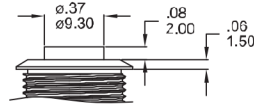
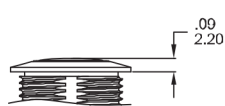
MPB16
Pushbutton Switches

BUTTON TYPE

R Round Button

H High Button

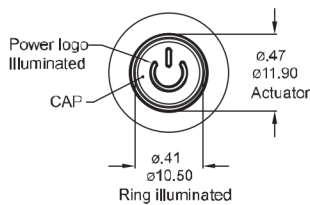
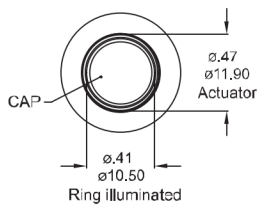
F Flat Button



LIGHT TYPE

E Ring,Round

P Power logo,Round

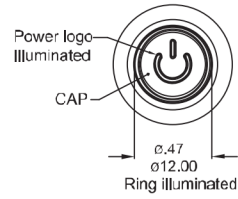
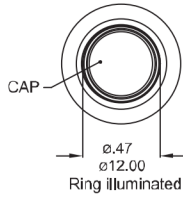
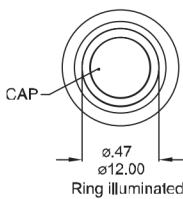


* E,P light type only for CA,CB body.
* HE,FE,FP light type only for A1,A2,A3 body.

HE Ring,High

FE Ring,Flat

FP Power logo,Flat

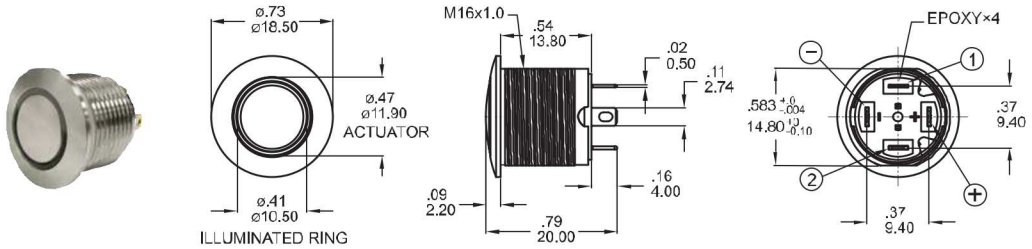


MPB16 Series

1.6mm Metal Pushbutton Switches

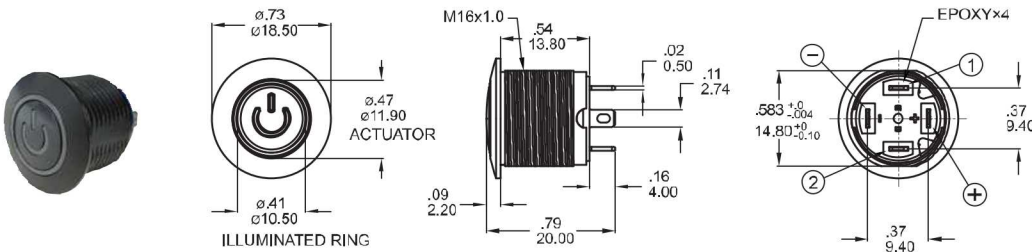
DIMENSION

E Ring



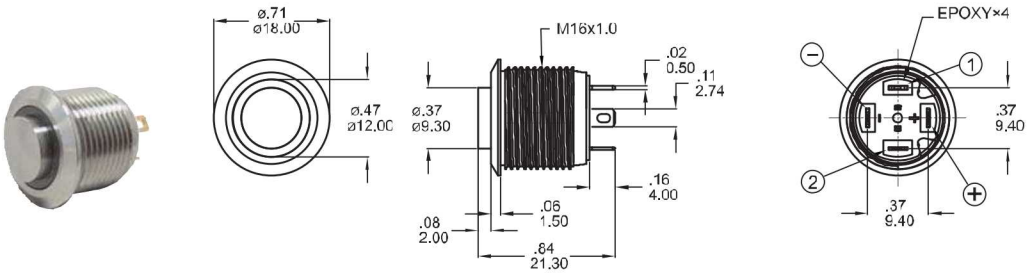
Part No. Shown : MPB16-CARE-□-JR-0V

P Power logo



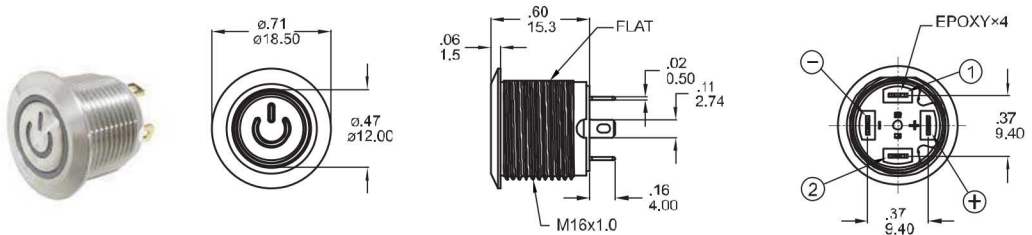
Part No. Shown : MPB16-CBRP-□-JR-0V

HE Ring



Part No. Shown : MPB16-A2HE-□-JR-0V

FP Power logo



Part No. Shown : MPB16-A3FP-□-JR-0V



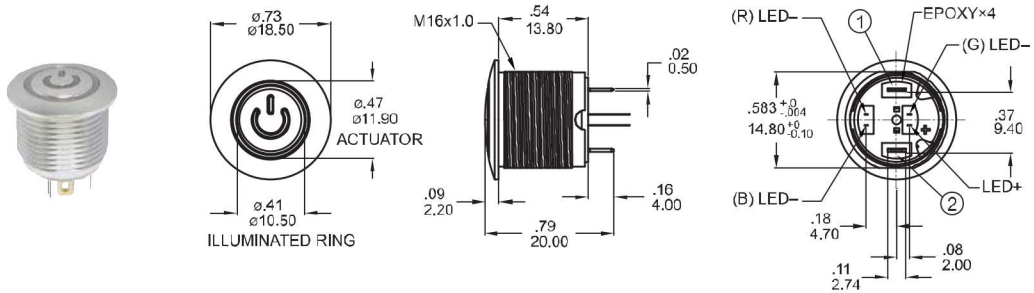
MPB16
Pushbutton Switches

MPB16 Series

16mm Metal Pushbutton Switches

DIMENSION

E Ring

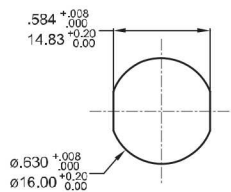


Part No. Shown : MPB16-CARE-RGB-JR-0V

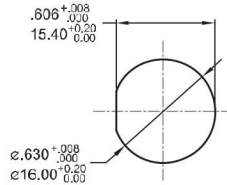
PANEL CUTOUT / HARDWARE

PANEL CUTOUT

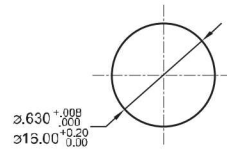
CA/CB/A1 Type



A3 Type

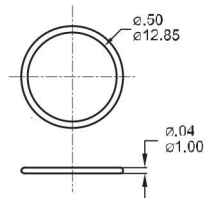


A2 Type

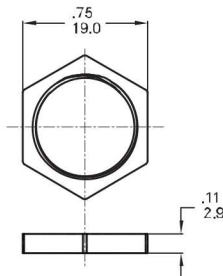


HARDWARE

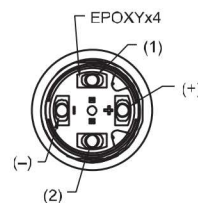
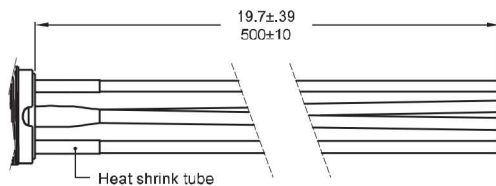
O-RING



M16 NUT



T1 ※ Wire=Multi-wire lead AWG20, section 0.6mm², UL approved



Non-LED

DESCRIPTION	WIRE COLOR
TERMINAL 1	BLACK
TERMINAL 2	BLACK

With LED

DESCRIPTION	WIRE COLOR
TERMINAL 1	BLACK
TERMINAL 2	BLACK
LED+	RED
LED-	GREEN

